

# Murtenstrasse 24–28

## building guide DBMR / ZTHa





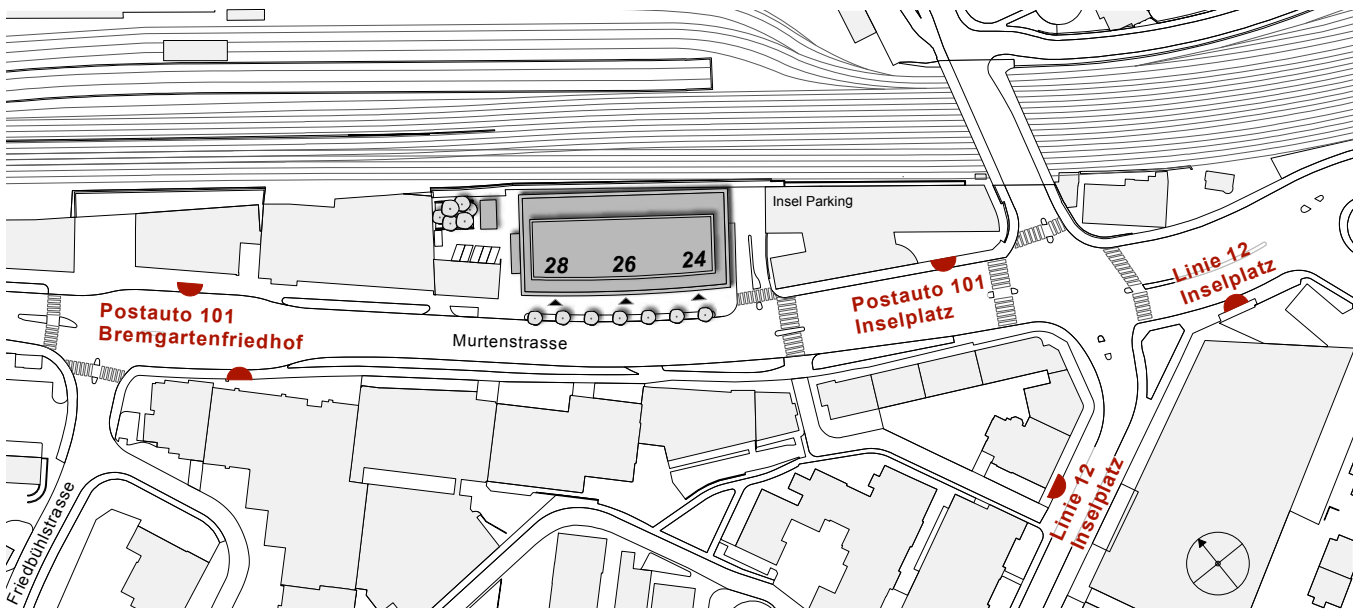
# Welcome to Murtenstrasse 24–28

*This brochure was prepared in order to provide you, as a new user, with the most important building and contact information in a compact form to ensure that you get off to a good start.*

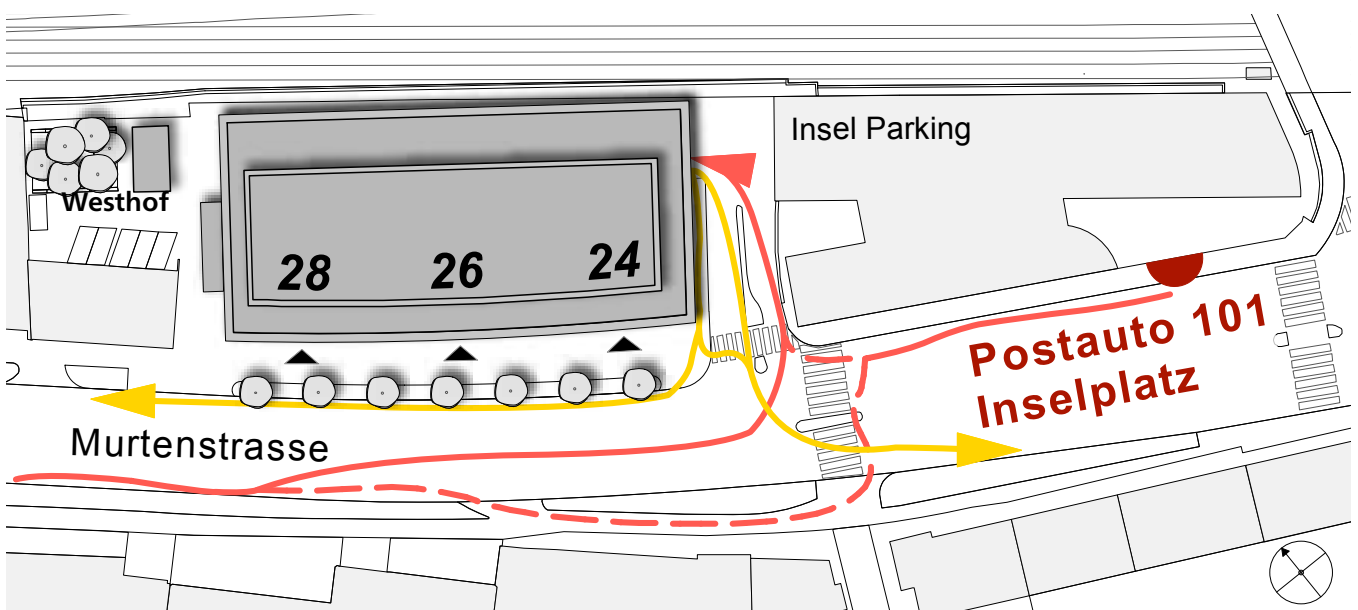
*In it, you'll find information on the history of the project, art, construction, plans showing the most important rooms in the building and useful information on travel, reserving meeting rooms and other questions related to everyday use.*

*On behalf of those involved in the operating project and members of the editorial team, we wish you a successful start at your new place of work and are excited to see how the building proves itself in day-to-day use.*





General map with public transportation stops



General map showing bike entrance and exit routes

# Building guide for Mur 24–28

## General building information

The Murtenstrasse 24–28 building is located between the railway tracks and the premises of Bern University Hospital on the right side of Murtenstrasse, directly adjacent to the Inselparking. Bern train station is about a 10-minute walk away and can be reached by crossing the red bridge (Bühlstrassenbrücke) and following Stadtbachstrasse.

### • Arrival via public transportation

The bus stops closest to the building are Inseplatz and Bremgartenfriedhof; they are served by bus lines 12 (operated by Bernmobil) and 101 (operated by Postauto).

### • Arrival via bicycle

Employees may access the employee bicycle parking facility by bike via the access ramp leading into the Bern University Hospital parking garage (Inselparking). Bicyclists arriving with the inbound direction of traffic (toward Bern) not only have the option of entering the parking facility using the left-turn lane (red) but also of taking the sidewalk on the right side of the street to the new crosswalk and merging with the vehicles that just turned right (red dashed line). When leaving the bike parking facility, bicyclists may use the sidewalk along the front of the building in addition to the parking garage exit lanes. Bicyclists turning left to head into Bern once again have the option of using the crosswalk to queue in the left bicycle turn lane, which has its own traffic light.

### • Parking spaces for private vehicles

Paid parking for vehicles up to 2m in height is offered in the Inselparking garage.

### • Deliveries

Deliveries by vehicles of up to 28t with integrated hydraulic lifts can be made on the right-of-way strip along the front of the building. A weather-protected area with a projecting roof is available on the west side of the building for unloading. From there, deliveries are distributed through the building by means of a freight elevator at the heart of the Murtenstrasse 28 building (maximum load of 2.5t, accessible for pallets).

The publicly accessible areas of the building are open during normal hours of operation, weekdays from 8 a.m. to 5 p.m., when Technical Services is on site.

Special hours during the holidays, for example, are communicated by the Technical Services office, room 020 on the ground floor, near the Murtenstrasse 28 entrance.

Only authorized persons may access the building outside opening hours.

### • House rules

The general house rules of the University of Bern shall apply within the building.

The building committee is responsible for building-specific rules and operational issues that concern all users of the building.

### • Contact Facility Services

The building's Technical Services team can be reached at [hd.mur24-28.bt@unibe.ch](mailto:hd.mur24-28.bt@unibe.ch) / + 41 31 684 55 53

# The Department for BioMedical Research

In the new building at Murtenstrasse 24-28, the DBMR is spread out across these floors:

## Location of the various DBMR units

### 5th floor

Executive Board  
Cancer Therapy Resistance (CTR) – East  
Oncology-Thoracic Malignancies (OTM) – West

### 4th floor

Reception  
DBMR Facility Services  
Core Facilities  
Mass Spectrometry and Proteomics (PMS)  
Flow Cytometry and Cell Sorting (FCCS)  
Live Cell Imaging (LCI)  
BioMedical Genomics (BMG)  
Translational Organoid Resource (TOR)

### 3rd floor

Cardiovascular Diseases (CVD) – East  
Lung Precision Medicine (LPM) – West

### Ground floor

Seminar room

### 2nd basement floor

Storage  
Interim storage for biomedical waste



Erdgeschoss

# Research (DBMR)

## How to access the DBMR units?



### For employees

Either through the entrance at Murtenstrasse 24 (badge access only) or Murtenstrasse 28 (open during the day on weekdays). The entrance to the building at Murtenstrasse 26 is reserved for the Institute of Forensic Medicine (IRM).

DBMR facilities are badge access only through the entrance at Murtenstrasse 24. DBMR facilities are badge access only through the entrance at Murtenstrasse 28 or through the reception area on the 4th floor.

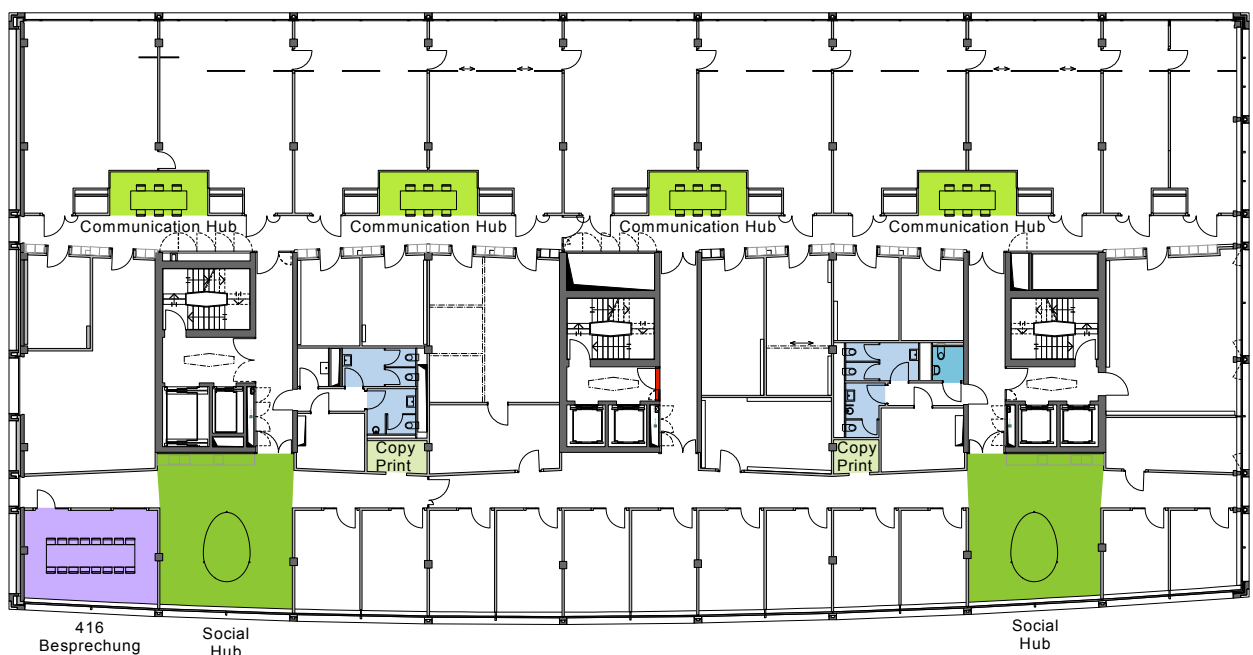
Badge update stations (reader, white) and terminals for automatic time recording (square, black) are located in both of the elevator halls on the ground floor at the back of the building (see layout below).

### For non-employees

(visitors, deliveries, technicians, etc.)

Visitor entrance at Murtenstrasse 28 (open during the day on weekdays). Report to the reception on the 4th floor. If needed, DBMR Facility Services can be contacted for a visitors badge that grants temporary access.

Deliveries will be accepted at the side entrance of Murtenstrasse 28



## 4. Obergeschoss

# The Department for BioMedical Research

## Where can we find help and support at DBMR?

### - in the building

- Reception/Facility Services DMBR Mur24:  
The reception desk and offices of DMBR Facility Services at Murtenstrasse 24–28 are located on the 4th floor in rooms 412-413.  
Tel.: **+41 31 684 04 00** or [td.dbmr@unibe.ch](mailto:td.dbmr@unibe.ch)  
Technical assistance with equipment or building installations (e.g. gas connections) must be coordinated through DMBR Mur24 Facility Services.

- Executive Board Secretariat:  
The Executive Board Secretariat is located on the 5th floor, room 501.  
[dirsecretariat@dbmr.unibe.ch](mailto:dirsecretariat@dbmr.unibe.ch)

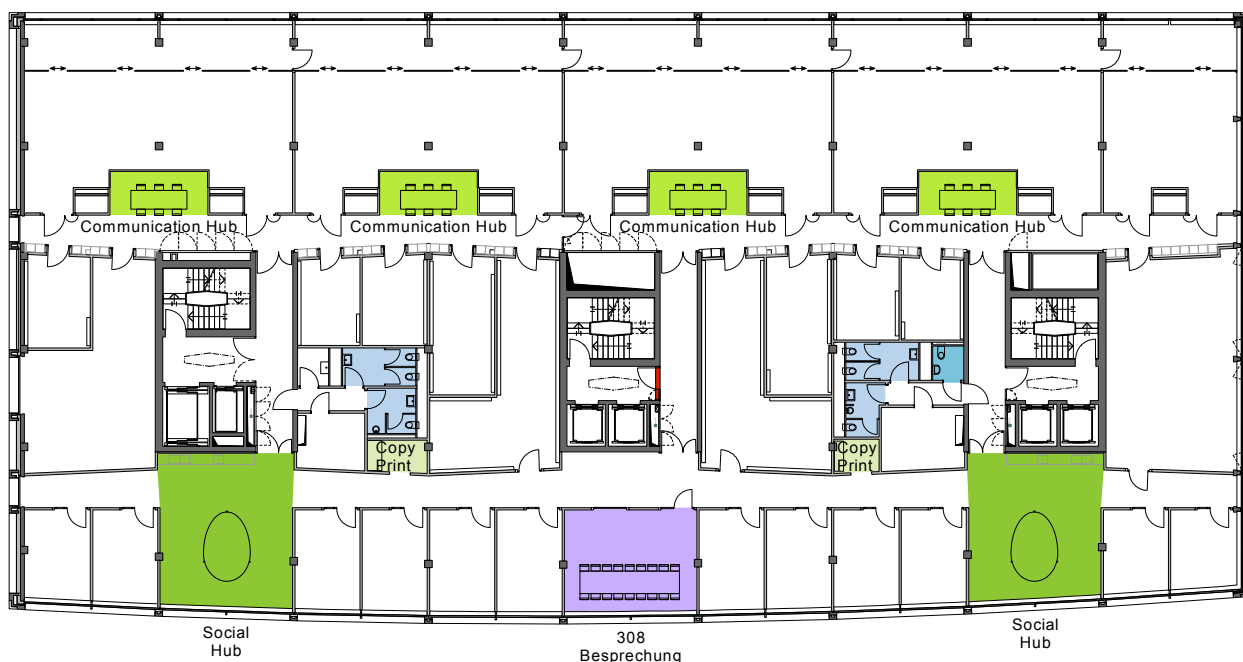
- Grants Office:  
The DBMR Grants Office is located on the 5th floor, room 507.  
[info.grant@dbmr.unibe.ch](mailto:info.grant@dbmr.unibe.ch)

- Operations Management:  
DBMR Operations Management is located on the 4th floor, room 440.  
[operations@dbmr.unibe.ch](mailto:operations@dbmr.unibe.ch)

### - at Murtenstrasse 35

- The Secretariat, IT, Workshop and Supply Center are located in the MEM building at Murtenstrasse 35.  
[sekretariat@dbmr.unibe.ch](mailto:sekretariat@dbmr.unibe.ch)  
[finanzen.dbmr@unibe.ch](mailto:finanzen.dbmr@unibe.ch)  
[personal@dbmr.unibe.ch](mailto:personal@dbmr.unibe.ch)  
[it@dbmr.unibe.ch](mailto:it@dbmr.unibe.ch)  
[td.dbmr@unibe.ch](mailto:td.dbmr@unibe.ch)

- Supply Center:  
The DBMR Supply Center will remain at Murtenstrasse 35 for the time being.  
Consumables that had previously been provided by the DBMR are also available to the programs and Core Facilities at Murtenstrasse 24.  
[supplycenter.dbmr@unibe.ch](mailto:supplycenter.dbmr@unibe.ch)



### 3. Obergeschoss



# Research (DBMR)

## Where can we meet at the DBMR?

### Conference rooms

5th floor Room 508/509 9 seats each, flatscreen, sound, whiteboard  
4th floor Room 416 16 seats, flatscreen, sound, whiteboard  
3rd floor Room 308 18 seats, flatscreen, sound, whiteboard  
Reservations are managed within Outlook.

5th floor Room 504 9 seats

If the Executive Board's conference room is unoccupied, it can be reserved and used in consultation with the Executive Board Secretariat.  
[dirsecretariat@dbmr.unibe.ch](mailto:dirsecretariat@dbmr.unibe.ch)

### Seminar room:

Ground floor Room 050 36-60 seats Projector, sound

The DBMR and IRM share the large seminar room.

It can be booked through the Executive Board Secretariat of the DBMR or the IRM.  
[dirsecretariat@dbmr.unibe.ch](mailto:dirsecretariat@dbmr.unibe.ch)

### Social hubs:

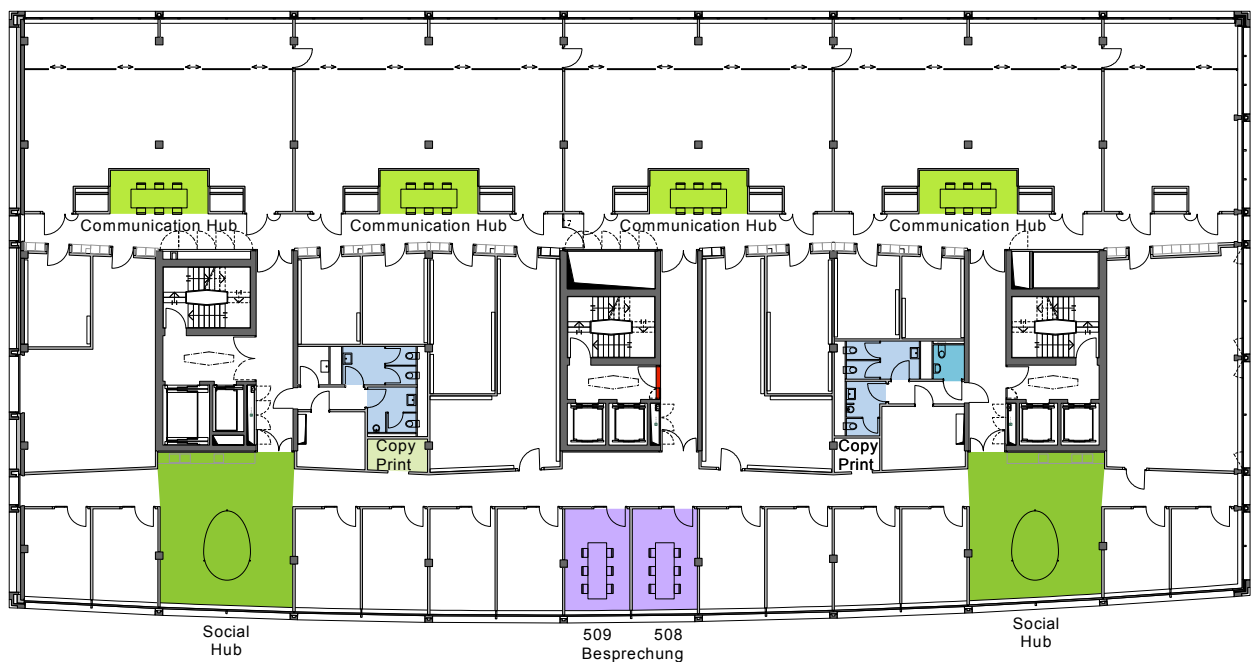
There are a total of six social hubs equipped with microwaves and refrigerators on the 5th, 4th and 3rd floors. There is one coffee machine per floor. A Selecta vending machine with chilled beverages and a selection of snacks is located in the copy hub on the 4th floor next to the reception area. Items can be paid for by UNICARD.

## Our offices

The offices and office workplaces in the labs are equipped with new furniture.

Nothing may be affixed directly to the walls. Exemptions may be requested from the university via DMBR Mur24 Facility Services. Furniture may only be moved with the approval of Operations Management.

Keys for the offices can be requested through the Secretariat.  
[sekretariat@dbmr.unibe.ch](mailto:sekretariat@dbmr.unibe.ch)



5. Obergeschoss

# Useful everyday information

## Printing and copying

Copy/print hubs with a multifunctional device are located in the office corridors on the 5th, 4th and 3rd floors.

## Mail

Letters and parcels are made available sorted by program in post room 021.

## Food and drinks

Several different restaurants with seated dining or take-away offers are located within close proximity to Murtenstrasse 24–28. The restaurants of the Inselspital (Bern University Hospital) are also just a short walk away. A food corner is expected to open up later on the ground floor of the building. A Selecta vending machine with chilled beverages and a selection of snacks is located in the social hub on the 4th floor next to the DBMR reception area.

## Useful information

### First aid and breastfeeding room

The first aid and breastfeeding room (Room 040) is located on the ground floor by the entrance to Murtenstrasse 24. It is equipped with a refrigerator (individual compartments), changing table and rocker as well as an examination bed and first aid materials.

### Bicycle parking spaces

The bicycle parking spaces are located on the first basement floor and can be accessed through the entrance between the Inselparking garage and Murtenstrasse 24 (badge access). Bikes must be placed in the stands. Additional covered spaces are provided for visitors on the Westhof patio.

### Changing room / showers

There are changing rooms (rooms N-105/N-106) with showers located across from the bike room on the first basement floor of Murtenstrasse 24. These are accessible to all users during the building's opening hours. Please take personal sports equipment with you once it's dry.

### Smoking

Smoking is prohibited throughout the entire building. A smoking area with ashtrays is located on the Westhof outdoor patio at Murtenstrasse 28.

### WLAN

The university's networks – eduroam and public-unibe – are accessible throughout the entire building.

### In-building mobile amplifier

An in-building mobile amplifier is set up inside the building that boosts mobile signals to guarantee reception, even on the basement floors. At present, this amplifier only boosts signals from one provider (Swisscom).

## Lighting and blind controls

The building's lighting and window blinds are controlled through the building management system. Automatic controls are planned for this for several reasons including product protection (frost), personal protection (facade cleaning) and in the interest of optimizing energy consumption (Minergie P Eco). For the most part, these controls can be overridden by users on site. Auto-mated operation is reactivated at 1:30 p.m. every day.



### Lighting controls

- Press and hold + / -: stepless dimming lighter / darker
  - Press and release + / -: on (at most recent brightness setting) / off
- The light is turned off 30 minutes after the most recent presence was detected.

### Window blind controls

- Press and hold up / down: moves blinds to the top-most / bottom-most position
- Press and release up / down during movement: stop blinds at the current position
- Press and release up / down when standing still: open / close louvers

## Safety and health protection

**Escape route maps** with information on what to do in various emergencies are located in the corridors on every floor.

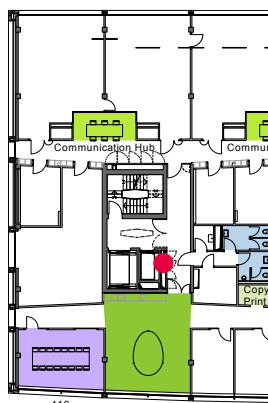
Make sure you are aware of basic procedures, escape routes, contact details and assembly points.

**Eye showers** are provided on every lab sink.

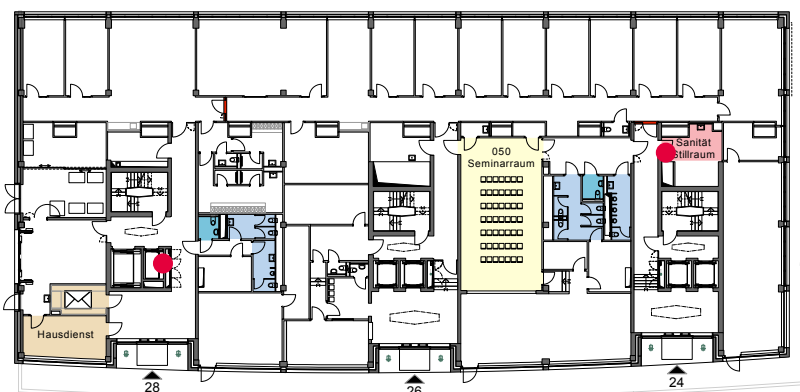
**Emergency showers** are located in the laboratory corridors, with three available on each floor.

**Fire extinguishers** are provided in the main labs and in the emergency exit corridors. **1. First-aid kits** are provided in certain labs and in the first-aid room on the ground floor of Mur24.

**Defibrillators** are located on the ground floor and on the 4th floor (red dots).



4. Obergeschoss



Erdgeschoss

# Useful information about the DBMR

## Development and vision

The Department for BioMedical Research (DBMR) of the Faculty of Medicine of the University of Bern was established in 1994 by the University of Bern and the Inselspital (Bern University Hospital). The mission of the DBMR is to promote and facilitate an integrative perspective to clinical research with a strong emphasis on the development of translational approaches, the use of omics and other cutting-edge technologies, and extensive interaction and collaboration between laboratory-based and patient-oriented clinical research. Since its inception, the DBMR has been thriving as a multidisciplinary biomedical research hub and has established partnerships with the Bern University Hospital, the Faculty of Science, the Vetsuisse Faculty, the Swiss Personalized Health Network (SPHN), the Personalized Health and Related Technologies (PHRT) Focus Area and numerous other national and international institutions. These strategic efforts have made DBMR a vibrant research environment capable of promoting efforts to address the latest biomedical challenges and contributing to the advancement of health care.

## Organization

The scientific community of the DBMR is made up members from the clinics of the Inselspital, the Bern University Hospital and the Faculty of Medicine. The department is headed up by director Prof. Mark A. Rubin, MD, who is supported by deputy director Prof. Anne Angelillo-Scherrer, MD, and the elected members of the Board of Directors.

## Research programs

Research conducted at the DBMR spans all biomedical fields. To foster synergies and a creative, collaborative environment, research activities are organized into 13 topical research programs that encompass about 100 participating labs and are supplemented by several independent research labs.

The following four research programs are located at Murtenstrasse 24–28:

- **CTR** Cancer Therapy Resistance; contact: Prof. Dr. Marianna Kruithof-de Julio
- **CVD** Cardiovascular Diseases; contact: Prof. Dr. Yvonne Döring
- **LPM** Lung Precision Medicine; contact: PD Dr. Loretta Müller-Urech
- **OTM** Oncology-Thoracic Malignancies; contact: PD Dr. Thomas Marti

## Core facilities

The DBMR also manages and operates state-of-the-art technical core facilities that serve the department as well as research groups from the University of Bern and other public and private institutions. To ensure a better user experience and workflow, the technical core facilities are all located on Mu24-28 (4th floor).

### • PMS CoreFacility

The Mass Spectrometry and Proteomics Core Facility is equipped with state-of-the-art mass spectrometry technology based on orbitrap instruments and provides many years of expertise to academic research groups. Powerful computer hardware running different data interpretation software tools ensures that results are delivered to users quickly. Contact: Prof. Dr. phil. nat. Manfred Heller, [pmscf@dbmr.unibe.ch](mailto:pmscf@dbmr.unibe.ch)

# and the ZTHa Mouse Breeding Facility

- **FCCS CoreFacility**

The Flow Cytometry and Cell Sorting Core Facility provides instruments and the know-how required to perform flow cytometry, cell sorting and slide-based cytometry.  
Contact: Dr. phil. nat. Stefan Müller, [stefan.mueller@dbmr.unibe.ch](mailto:stefan.mueller@dbmr.unibe.ch)
  - **LCI CoreFacility**

The Live Cell Imaging Core Facility facilitates access to state-of-the-art optical imaging infrastructure and know-how, particularly for the visualization of living cell and tissue cultures. Bright field and/or fluorescence microscopy can be used to analyze fixed and living cell and tissue samples.  
Biological processes can be visualized and studied in live time series.  
Contact: PD Dr. Fabian Blank, [fabian.blank@dbmr.unibe.ch](mailto:fabian.blank@dbmr.unibe.ch)
  - **BMG CoreFacility**

The BioMedical Genomics Core Facility. The BMG Core Facility provides assistance to interested researchers on the planning, execution and analysis of projects aimed at generating genomic and other related data. It complements the services offered by the Clinical Genomics Laboratory (CGL) at the Inselspital (Bern University Hospital) and the Next Generation Sequencing (NGS) platform of the University of Bern.  
Contact: Prof. phil. nat. Ursula Amstutz, [ursula.amstutz@insel.ch](mailto:ursula.amstutz@insel.ch)
  - **TOR CoreFacility**

The Translational Organoid Resource Core Facility has expertise in the derivation of organoid cultures from human patient material, the optimization of culture conditions, as well as the genomic, transcriptomic and functional characterization of organoids. It also maintains a collection of established and validated organoids that are available for other researchers to use.  
Contact: Prof. Dr. phil. nat. Marianna Kruithof-de Julio, [marianna.kruithofdejulio@dbmr.unibe.ch](mailto:marianna.kruithofdejulio@dbmr.unibe.ch)
- Mouse Breeding Facility EAC**
- The mission of the new Mouse Breeding Facility (Mur28) is to centralize the breeding of genetically modified mice for the University of Bern. It is part of the Experimental Animal Center (EAC), which aims to promote the culture of care and improve animal welfare at the University of Bern.
- Mu28 is a modern animal breeding facility with eight animal rooms, an embryology lab and a processing area that extend across nearly 1200 m<sup>2</sup> of usable floor space. It is equipped with state-of-the-art technology to ensure the welfare of both staff and animals.
- The Mouse Breeding Facility team can be found on the ground floor of the Murtenstrasse 28 building. Please don't hesitate to stop by at any time.



# Your neighbors at the IRM

## Institute of Forensic Medicine

*Approximately half of the building at Murtenstrasse 24–28 is used by the DBMR, with the other half serving as the IRM's new location. A long-awaited milestone was reached when all departments were united under one roof along with state-of-the-art infrastructures for research, teaching and service provision.*

The IRM supports the police forces and law enforcement with its scientific expertise. That includes not only medical doctors, of course, but also toxicologists, biologists, psychologists, lawyers, forensic scientists and ballistics experts, just to name a few. These scientists are supported by both technical assistants (lab, autopsy, imaging, histology, etc.) and administrative personnel (Secretariat, HR, Finance, etc.). The IRM also has its own computer technicians on staff.

Although the IRM is a university institute, the nature of its work requires that access to the institute be restricted to as few people as possible. Since the areas belonging to the IRM are strictly self-contained, incidental encounters with people working at the IRM will not be possible anywhere in the building. It is entirely possible, however, that you might run across your forensic neighbors in front of the building, in the public areas of the building or at the "11th Table" on the Westhof patio.

The IRM is also the reason why you can expect to frequently see police forces in front of the building. That doesn't mean anything terrible has happened and is simply an inevitable aspect of this close collaboration between the IRM and the cantonal or federal police. Seeing police cars stop by will be a common occurrence and you'll eventually get used to the sight. The same thing applies to hearses around the IRM, which will also become a much more common sight.

The Institute of Forensic Medicine of the University of Bern consists of six departments.

- Forensic Medicine and Imaging
- Forensic Toxicology and Chemistry
- Forensic Molecular Biology
- Traffic Medicine, Psychiatry and Psychology
- Anthropology
- Medical Law

At the Department of Forensic Medicine and Imaging, around 1000 corpses are examined every year, with roughly a quarter of them undergoing an autopsy. The physicians also examine 400-500 surviving victims of physical assault, sexual violence, child abuse etc. Since this service is provided 24/7, you might also see some signs of activity at night or over the weekends.

The Department of Forensic Toxicology and Chemistry is responsible for performing laboratory analyses of biological specimens taken from living and deceased subjects and focuses on poisoning and driving impairments.

The Department of Forensic Molecular Biology examines genetic fingerprints found either in evidence collected at crime scenes or from individuals somehow related to the investigation of a crime. The genetic fingerprints are also used to identify unidentified bodies or to investigate the kinship of different individuals for paternity testing and other purposes.

The Department of Traffic Medicine, Psychiatry and Psychology assesses the capacity to drive of individuals who may be impaired due to different diseases, disabilities, problems with addiction or for reasons related to their personality.

The Department of Anthropology investigates skeletal remains that originate either from crime scenes or archaeological excavations.

The Department of Medical Law is Switzerland's nationwide center of excellence for reviewing allegations of malpractice.

The seven departments are spread out over the 1st basement floor, the ground floor as well as the 1st, 2nd and 6th floors.





# Design principles and concepts of use

## Building layout

- **Offices with sidelights**

The laboratory floors were designed based on a three-bay structure. The office and conference rooms are on the side of the building facing Murtenstrasse and accentuated with social hubs. While doors of the office cubicles can be closed or left open as the situation requires or in line with personal preferences, the sidelight (glass panel next to the door) allows daylight to reach and illuminate the corridor. It also reveals whether the person being sought out is in the office or maybe busy on a phone call without having to interrupt that person's work. Nothing may be taped/glued to the surface of the glass and it must not be covered.

- **Social hubs**

The social hubs and kitchenettes are designed as open niches in the hallways and are intended to offer space for individual breaks, eating, informal chats and in-house events.

If required, Technical Services can mount the large tables on the wall, both at sitting or standing height. Additional furnishings should be appropriate for the different types of uses and group sizes. Warm lighting underscores the pleasant atmosphere.

- **Lab zone**

The lab zone is broken down into nine lab axes, each of which has its own supply and exhaust air from its own riser zone. The room layout varies from half- to dual-axis labs, which can be refurnished fairly easily since media are supplied through laboratory media ceilings and all lab furniture is modular in design. Structural changes are also possible without much effort if needs or users change in the future.

- **Science boulevard  
Communication hubs**

The lab corridor has "science boulevard" niches, which offer a place to chat along the main pathways inside the lab coat zone.

- **Central zone**

The building's central zone features service laboratories without permanent workplaces, equipment rooms, freezer rooms and storage rooms.

These are connected to the ventilation system, gases and cooling system conventionally and on an as-needed basis without a media ceiling.

- **Furniture**

The furniture was newly procured for the entire building, including for the documentation workstations along the laboratory-side of the building. The furniture's stringent color concept that uses white, black and beige with occasional accents in gray, red and green stands for timeless and flexible furnishing.

New height-adjustable office desks can now be offered at all workstations for the first time. These are supplemented with mobile storage containers, side tables and filing shelves from several different product lines that were jointly evaluated in advance.

# The construction project

## Murtenstrasse 24–28

*Many highly committed people have spent the past few years working on this project – from the initial idea to the move – so that you can start and continue your work today in this building. This short summary of the project's history will give you an idea of how the various project players collaborated to create a functioning laboratory building.*

### A mercurial project history

- **Project trigger**

It had already become apparent at the turn of the millennium that the 90-year-old headquarters at Bühlstrasse 20 were no longer able to accommodate the growth of the Institute of Forensic Medicine. The building's structural status was inadequate and neither the laboratories nor workplaces were able to satisfy modern requirements. The Institute has been able to uphold operations over the past 20 years by making the adjacent wing of the building available and adopting a number of temporary solutions. At the same time, it started looking for a new location.
- **Development regulations**

An urban planning competition was organized in 2006 to evaluate the long-term urban development potential and concept for the development of the land north of Murtenstrasse. The winning project, entitled "Mont Vully", was submitted by the architect's office of Graber Pulver in Bern. The corresponding development regulations for "Murtenstrasse 10–66" entered into force on July 9, 2009.
- **Users acc. to the project definition**

The location's close proximity to the Bern University Hospital was ideal for uniting the various departments of the IRM in one modern building. The project also offers space for portions of the swiftly growing Department of BioMedical Research (DBMR). The creation of the new laboratory space and new capacities for animal breeding at this site lay the necessary groundwork for a complete reorganization of the sites.
- **Project planning loan, general contractor competition**

The approval of the CHF 7.25 million project planning loan kicked off a three-stage, anonymous general contractor competition with a separate pre-qualification round for all participating general contractors and architects. Of the seven projects submitted, one entitled "Quarz" was selected as the winner in 2014; it had been submitted by the architect's firm of Schneider & Schneider, Aarau, and Gross Generalunternehmung, Brugg.
- **Implementation loan, referendum**

The implementation loan for a total of CHF 154 million was approved 139:0 by the Cantonal Parliament of the Canton of Bern on January 20, 2015, and confirmed by the people in a cantonal referendum on February 28, 2016, where it earned 71% of the votes cast.
- **Construction period**

The property purchases became legally binding as result, thereby enabling demolition work to begin in April 2016. Difficulties with groundwater drainage in the excavation pit delayed construction by approximately another year due, after which the groundbreaking ceremony was held on April 20, 2018. This heralded the start of construction, which was concluded on time with the handover on June 3, 2021, and the building was inaugurated on August 31, 2021.

# Art and building

## Implemented winning projects

*In accordance with the Culture Promotion Act, the Office for Real Estate and Buildings announced a competition for artistic contributions.*

*Fabian Marti and Emanuel Rossetti were able to impress the jury.*

*Both artists' installations are mutually independent objects that have found their homes in the entrances and social hubs as well as in front of the lab building.*



### **“Drinking fountains and Necker cube”**

Emanuel Rossetti (\*1987) lives and works in Basel. He prefers industrial materials and reduces them to a minimum in order to sharpen his audience's eye for the essential. His artistic intervention in the Murtenstrasse lab building consists of three drinking fountains and one light sculpture. With them, Rossetti wants to trigger different levels of perception.



### **“Ten Tables and One”**

Fabian Marti (\*1979), born in the Canton of Fribourg, resident of Zurich, also presents a dual project: something that is both a work of art in its own right and a functional piece of furniture.

The artist will put ten egg-shaped objects in the lab building's social hubs

to serve as tables. The eleventh object is a sculpture located underneath the trees by the patio on the west side of the building (Westhof).

By extending the art project from indoors to outdoors, Fabian Marti's artistic contribution addresses the dialog between research and the environment and also underscores the idea

of the installation in the public-institutional space.

All eleven tables can stand alone and be used independently of one another. At the same time, the installation can also be viewed as one large overall project.

University of Bern  
Building Development, Facility Management  
Hochschulstrasse 6  
CH-3012 Bern

Telephone +41 31 684 81 11